

Cut your lead times with
Threaded Pipe from one
Brisbane location



SHARPE
ENGINEERING



EAST COAST
PIPE SUPPLIES

Your reliable linepipe specialists

Tel: 1300 327 473

www.eastcoastpipe.com.au



NEW Pipe Threading facility

Our new pipe Threading facility located within our Zillmere works will cut lead times for all those project managers who struggle to get their casing on-site on time.

Floor stocks of those fast moving sizes will be available to get you started while the full order is being completed.

Threaded pipe up to 273.1mm diameters

We have the capacity to carry over 5,000 tonnes of pipe at our Brisbane facility. Pipe sizes from 60.3mm to 610mm diameter in plain end or threaded up to 273.1mm. We can arrange delivery anywhere in Australia or overseas.

Our intention is to keep your costs down while giving a service second to none.

Brisbane Threading Facility
East Coast Pipe Supplies are the

specialists in carbon steel pipe and Sharpe Engineering are the specialists in threading pipe.

Together, we offer a facility second to none in Australia to the CSG/CMG industry. We understand the absolute necessity to supply casing at the right price and on time, all the time.

Our Commitment to Quality

Both East Coast Pipe Supplies and Sharpe Engineering are totally committed to offering a quality product at all times.

Sharpe Engineering have built their business by supplying quality threads to the oil and gas industries for many years and are recognized as the leaders in the threading business.

The facility at Roma is the largest threading business in Australia employing thirty six local people. East Coast Pipe Supplies are just as committed.



Threaded pipe up to 273.1mm diameters

Size/Imperial	Size/Metric	Type	Kgs/per Metre
4-1/2"	114.3 x 6.0	ERW	16.02
5"	127.0 x 6.0	ERW	17.91
5-9/16"	141.3 x 6.6	ERW	21.92
6-5/8"	168.3 x 6.4	ERW	25.55
6-5/8"	168.3 x 7.1	ERW	28.22
7"	177.8 x 8.0	ERW	33.50
7-5/8"	193.7 x 8.0	ERW	36.64
8-5/8"	219.1 x 8.2	ERW	42.65
9-5/8"	244.5 x 8.0	ERW	46.66
10-3/4"	273.1 x 9.3	ERW	60.5

Tubular Services

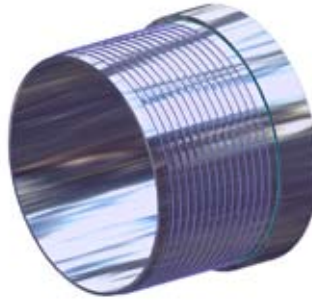
Sharpe Engineering offers its customers in the oil and gas exploration and production industry the service of machining threaded connections on drillpipe, drill collars, H.W.D.P., subs and specialty drilling tools. Machining API and premium connections on Oil Country Tubular Goods (OCTG) or casing/tubing is the main service provided by Sharpe Engineering.

Every thread is 100% gauged and inspected with gauges and standards being certified and calibrated to traceable industry standards.

Premium Casing / Tubing Connections

SFJ (Sharpe Flush Joint)

A rugged premium casing/tubing connection with a shallow taper specially designed for thin wall pipe. Full thread contact with additional shoulder and nose stop ensures a seal and exceeds maximum body pressure ratings. Proof tensile load tested. Easy stabbing, make-up and break-out. No welded joints!



This connection has proven to be very popular with coal bed methane (CBM) operators and drilling contractors especially in deviated wells.

SFJ is currently available in sizes ranging from 3-1/2" to 10-3/4" O.D. Over 30,000 metres of SFJ has been run in QLD and NSW in the last 4 years.

Make-up Torque & Pressure Ratings

Casing Size O.D. mm (inches)	Grade	Wall Thickness (mm)	MIN. Torque (ft/lb)	MAX. Torque (ft/lb)	Pressure Rating (psi)
114.3 (4-1/2")	J55	6.4	1600	2500	
114.3 (4-1/2")	API 5L C350	6.0	1200	1800	
141.3 (5-9/16")	API 5L C350	6.4	1700	2300	
168.3 (6-5/8")	API 5L C350	6.4	2700	3500	
177.8 (7")	API 5L C350	8.2	4100	4850	
219.3	API 5L C350	8.2	4400	5000	

**Torque may be deviated from the recommendation depending on thread compound used, and very hot or very cold temperature may change friction factor of compound.*

Rotary Shouldered Connection Finishings

Phosphating

This chemical process etches the machined surface of the pin or box connection which assists in retaining the thread compound to ensure proper lubrication of the mating surface during make-up, therefore preventing galling. All rotary shouldered connections machined at Sharpe Engineering are coated with the phosphate solution.

Cold Rolling

One way to improve the life of drill collar and down-hole drilling tool connections is by cold rolling. Cold rolling leaves the surface fibres in the root of the thread with a residual compressive stress which means a higher tensile can be applied to the thread before failure occurs.

Accreditation



Sharpe Engineering operates a certified ISO 9001:2000 Quality Management System and also meets the requirements of Technical Specification ISO/TS 29001, the petroleum, petrochemical and natural gas industry sector specific quality standard and service supply organisations.



Sharpe Engineering is a DS-1 registered vendor for threading rotary shouldered connections which will ensure our customers receive current industry standards applied to their product.



EAST COAST PIPE SUPPLIES

Your reliable linepipe specialists



ERW stock sizes

Pipe sizes ranging from 60.3mm to 610mm OD

Specifications

API 5LX42 / B Minimum YS 350MPA
ASTM A53 B Minimum YS 350MPA
AS1396 C350
AS1163 C350

Processing

Threading
Saw & Oxy cutting
Welding, Galvanizing, Painting



SHARPE ENGINEERING

"Quality machine shop services for the oil and gas industries"

Tubular services

Hardbanding services

ISO9001:2000
incorporating ISO/TS
29001:2003

Certification No. 13492



Contact Us

Phone:

(07) 3863 6100

or

1300 327 473

Fax:

(07) 3863 1700

Email:

info@eastcoastpipe.com.au

Address:

38 Pineapple Street,
Zillmere QLD 4034

www.eastcoastpipe.com.au